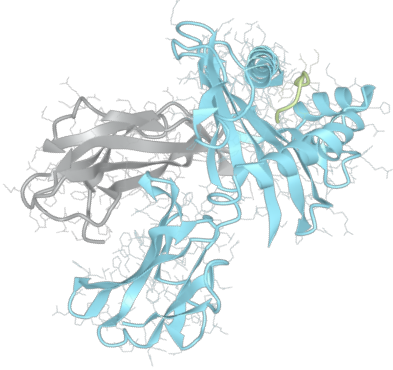


Product datasheet



sHLA-C*18:01

Cw*18:01, Cw*1801, C*1801, C1801
Cw1801, C*18, C18, Cw*18, Cw18, Cw6

Serological Name	Cw6
Peptide Load	Endogenous
Modification	Unmodified
Conjugation	Unconjugated
SKU	C1801

Product Description

Allele Name	C*18:01 B2m
HLA Class	HLA Class I
HLA Gene Locus	HLA-C
Alternative Allele Name A Chain	Cw*18:01, Cw*1801, C*1801, C1801, Cw1801, C*18, C18, Cw*18, Cw18, Cw6
Alternative Allele Name B Chain	-
Description	Recombinant, truncated Class I soluble Human Leukocyte Antigen (sHLA), naturally folded and glycosylated, loaded with endogenous peptides.
Serological Name	Cw6
Serological Split	-
Bw4/Bw6 Assignment	-
Bw4/Bw6 Sequence	-
Allele Frequency [World Population]	
A chain	1.00%
B chain	-

Associated products

[C1801bio](#)
[C1801pe](#)

Product Specification

Product name	HLA-C*18:01
HLA Species	Human
Host Cell Line Species	Human
Clone Designation	E6B9
Tail Specification	VLDL
Peptide Load	Endogenous
Modification	Unmodified
Conjugation	Unconjugated
Complexity	Monomer
Protein Format	Recombinant, truncated, soluble, non-modified, non-labeled, endogenously loaded
Storage Temperature	4 °C (This product should be stored undiluted)
Form	Liquid
Concentration	1000.0 µg/µl
Formulation	PBS/0.02% Sodium Azide
pH	7.4
Purification Method	Affinity Chromatography
Grade	Research Use Only [RUO]
Authentication Verification	Sequence Based Typing

Protein Sequences

Alpha Chain Sequence	CSHSMRYFDT AVSRPGRGEP RFIISVGYVDD TQFVRFDSDA ASPRGEPRAP WVEQEGPEYW DRETQKYKRQ AQADRVNLRK LRGYYNQSED GSHTLQRMFG CDLGPDGRLR RGYNQFAYDG KDYIALNEDL RSWTAADTAA QITQRKWEAA REAEQRRAYL EGTCVEWLR R YLENGKETLQ RAEHPKTHVT HHPVSDHEAT LRCWALGFYP AEITLTWQWD GEDQTQDTEL VETRPAGDGT FQKWAAVVVP SGEEQRYTCH VQHEGLPEPL TLRVSVSTDD DLA
Beta Chain Sequence	IQRTPKIQVY SRHPAENGKS NFLNCYVSGF HPSDIEVDLL KNGERIEKVE HSDLSFSKDW SFYLLYYTEF TPTEKDEYAC RVNHVTL SQP KIVKWDRDM

Related Products

[A0201](#)
[A0301](#)
[A2402](#)
[B0702](#)

Applications

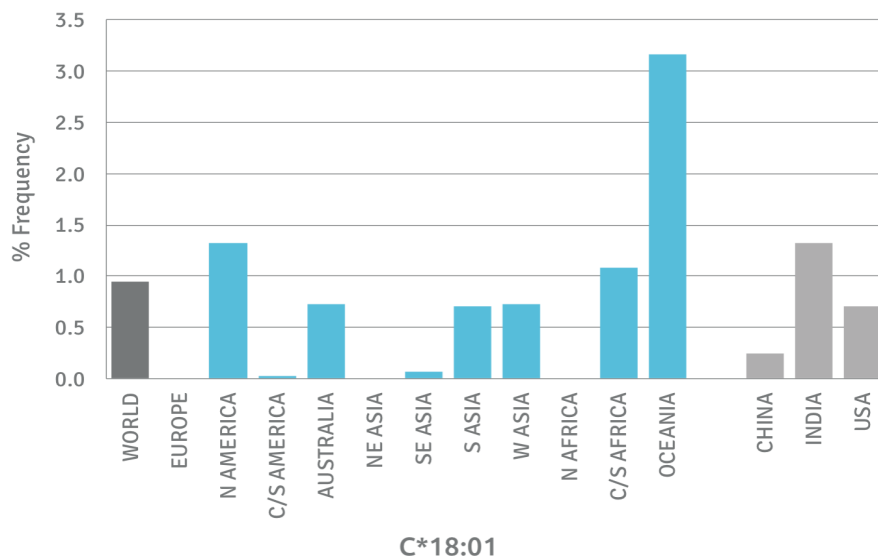
HLA Sandwich ELISAs
 HLA Direct ELISAs
 HLA-Sera Antibody Assays
 HLA Controls in ELISA Assays
 HLA Assay Standards
 HLA Blocking Assays
 HLA Neutralizing Assays
 HLA Competition Assays
 HLA Bead Assays
 HLA Immunization Procedures

Recommended Antibodies

W6/32
 Anti-B2m

Allele Frequency

Worldwide Allele Frequency



Please note:

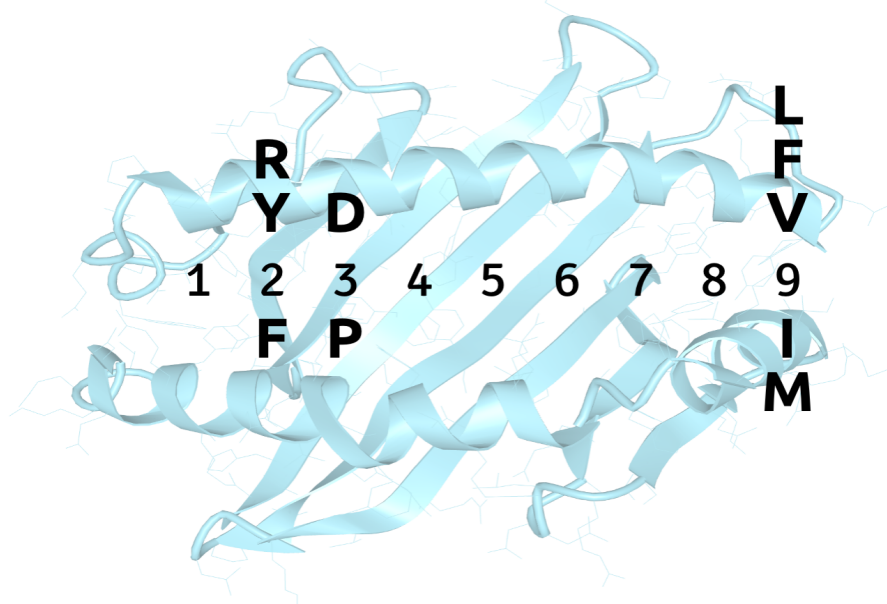
ALL PRODUCTS ARE FOR RESEARCH USE ONLY. NOT FOR COMMERCIAL USE IN DIAGNOSTIC PROCEDURES.
 For more information, please visit our Policies section on our website. For licensing inquiries, please contact

licensing@hlaprotein.com



Motif

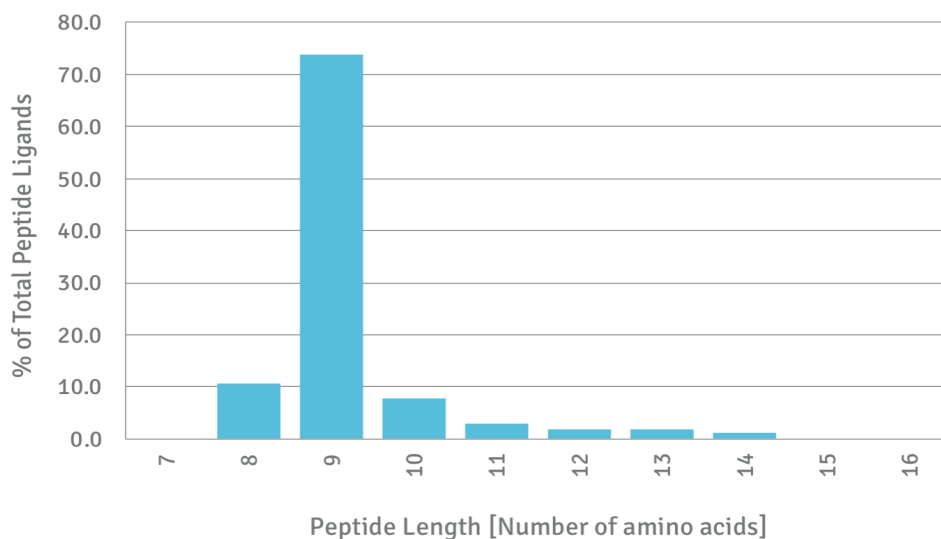
C*18:01 BINDING MOTIF



Length Distribution

HLA Length Distribution

C*18:01



Please note:

ALL PRODUCTS ARE FOR RESEARCH USE ONLY. NOT FOR COMMERCIAL USE IN DIAGNOSTIC PROCEDURES.

For more information, please visit our Policies section on our website. For licensing inquiries, please contact

licensing@hlaprotein.com

